

Unisphere Chiral Columns

Agela Technologies' Normal phase Chiral columns are based on modified celluloses and starches.

Features:

1. Multi-mode: hydrogen bonding, π - π and the "embedded"
2. Chiral AD-H and OD-H columns can analysis almost 80% Chiral compounds.
3. Good selectivity and high loading capacity

Type	Dimension (mm)	Particle Size (um)	Unisphere Chiral AD-H	Unisphere Chiral OD-H	Unisphere Chiral OJ-H	Unisphere Chiral Amide -1
Analytical	4.6 x 150	5	AD515059-0	OD515059-0	OJ515059-0	AM515059-0
Analytical	4.6 x 250	5	AD525059-0	OD525059-0	OJ525059-0	AM525059-0
Preparative	20 x 250	5	AD525209-0	OD525209-0	OJ525209-0	AM525209-0
Preparative	30 x 250	5	AD525309-0	OD525309-0	OJ525309-0	AM525309-0

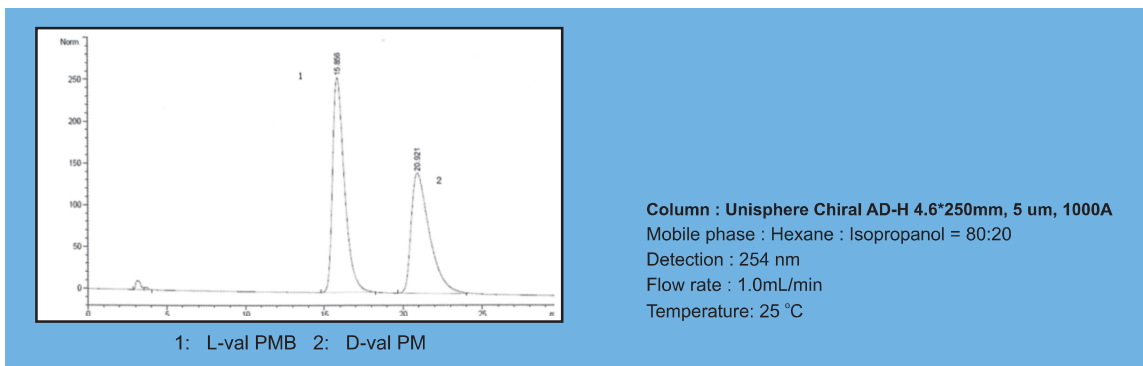
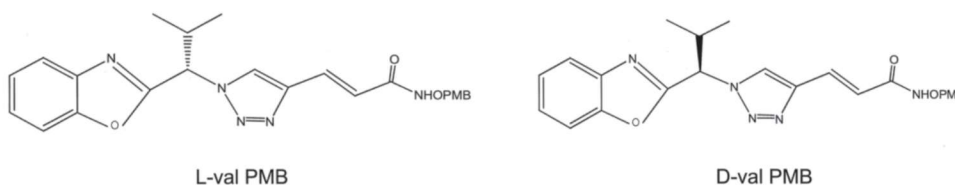
* Chiral Amide-1 can be used as reverse phase and normal phase

Unisphere Chiral AD-H : Coat with Amylose - (3,5 - dimethylphenyl carbamate)

Application:

Amide, Aromatic, carbonyl-group, nitro-group, sulfonyl-group, cyano-group, hydroxide radical, amine and carboxylic acid compounds

Example:

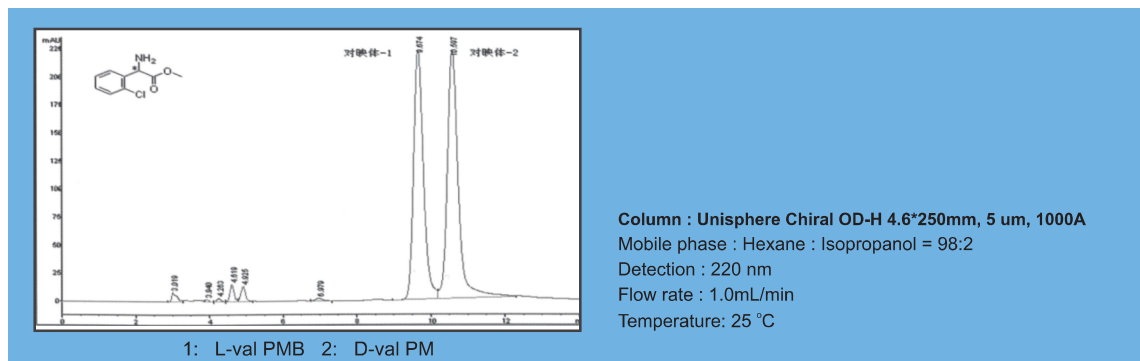


Unisphere Chiral OD-H : Coat with Cellulose - (3,5 - dimethylphenyl carbamate)

Application:

A phase suitable for the separation of β -blocker class and steroids, such as DHA, chlorine heart acyl amines, flavanones, metoprolol, etc

Example:

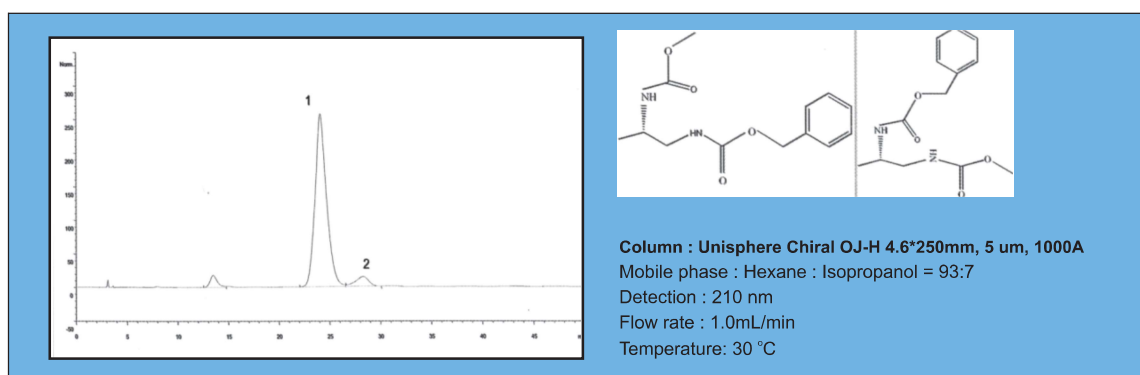


Unisphere Chiral OJ-H : Coat with Cellulose - [4 - methyl benzoate]

Application:

The Unisphere Chiral OJ-H column is used for the separation of carbonyl, amido, aryl, nitro, cyano, sulfonyl, hydroxyl, amine and carboxylic acid compounds.

Example:

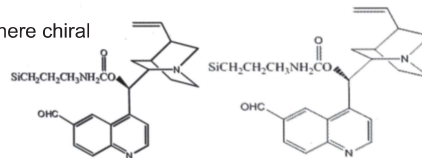


Unisphere Chiral Amide - 1 : bond with Amide

Unisphere Chiral Amide-1 is packed with 5um 300A Silica bonding with a unisphere chiral molecule whose structure is demonstrated as below :

Consider this column as the first option to separate amide chiral compounds:

1. Can be used as reverse phase and normal phase
2. Unique selectivity and high separation
3. More stable and longer column lifetime



Example:

