

Unisphere AQUA

Unisphere AQUA

A Slightly Polar, 100% Water Compatible and Universal Reversed Phase A unique and universal C18 HPLC phase made by our patented technology. This packing demonstrated unprecedented separation performance for compounds with a wide range of properties from hydrophilic to hydrophobic: polar, semi-polar and non-polar compounds.

Characteristics: Metal Impurity < 30ppm; Pore Size: 100Å;

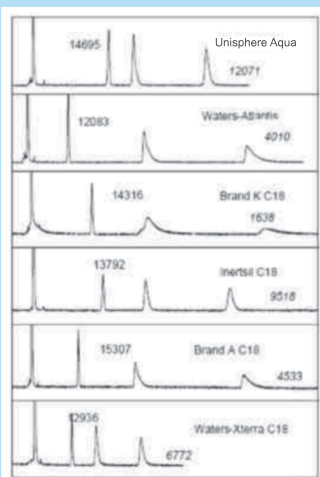
Specific Surface Area: 410m²/g;

Carbon Loading: 18%; Single end-cap;

Available Particle Size: 2.5µm, 3µm, 5µm or 10µm

Consider this column as the first option for your HPLC method development

- One of the most universal reversed phase columns
- Great inertness and efficiency for basic compound
- Enhanced retention of hydrophilic compounds
- 100% aqueous compatibility
- Robust and reproducible performance
- Wide pH range (1.5-9.0)
- Low bleed and high sensitivity for LC-MS



Great Inertness and Efficiency for Basic Compound

Sample: uracil, toluene, doxepin and amitriptyline

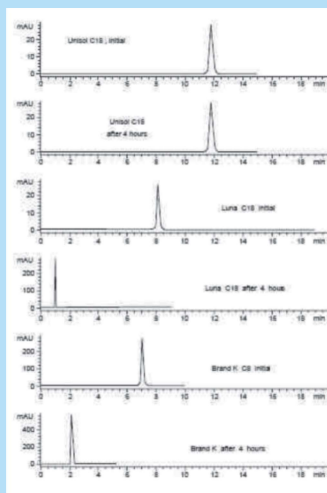
Column: 4.6x150mm, 5µm

Mobile Phase: 10mM sodium phosphate (pH=7.0) in 60% ACN

Temperature: 30°C

Flow Rate: 1mL/min

The plate numbers in regular font are for toluene, the plate numbers in italic are for amitriptyline.



Compatibility with 100% Aqueous Mobile Phase

Sample: Uridine Column: 4.6x150mm, 5µm

Mobile Phase: 100% water

Flow Rate: 1mL/min; the flow was stopped for 5 minutes during the testing period for each column

Temperature: 30°C